

BEST-IN-CLASS SOFTWARE



Experience the Most Advanced Software & Best-in-Class Graphics Simulation Training Has to Offer

Based on attempted, and achieved skills, the Driver Safety Risk Index (DSRI) utilizes deep-machine learning and advanced artificial intelligence (AI) to predict the strengths and weaknesses of a driver based on attempted module events. As the Drive Prodigy student progresses through their learning program, the DSRI is able to determine risk-factors based on the students' performance. Unachieved skills are tailored into the learning program for the student in the form of a learning module. Quiz questions are also generated in the form of an online quiz that is specific to the deficiencies of that driver's skills.

- Realistic Lighting, Reflections & Shadows - give the most advanced depth perception offered in driver training.
- Cross-Series Compatibility - allows you to upgrade your current system with the best-in-class graphics.
- Smart Artificial Intelligence Pedestrians and Vehicle Traffic.
- Built in GPS for Advanced Skill Training.
- Driving Simulator connected to LMS.
- Smart-Sim™ Technology.

Built For Experienced & New Drivers

- Over 350+ Training Scenarios and Growing.

Coming Soon 2023

- User friendly Scenario Creator Tools with "Draw-in" Roads, Intersections, Traffic Lights & Terrain.
- Real World Cities, Roads, Mountains & Weather Representative of your Area of Service. Available as Custom Upgrades.
- Real-time Simulated Training Tethering
- Offline Training Access
- AI Predictive Learning



Sim-Tech
SIMULATION TECHNOLOGY

1710 Afton Rd. Sycamore, IL 60178

www.sim-tech.us

630.365.3400

PROFESSIONAL DRIVER TRANSCRIPTS

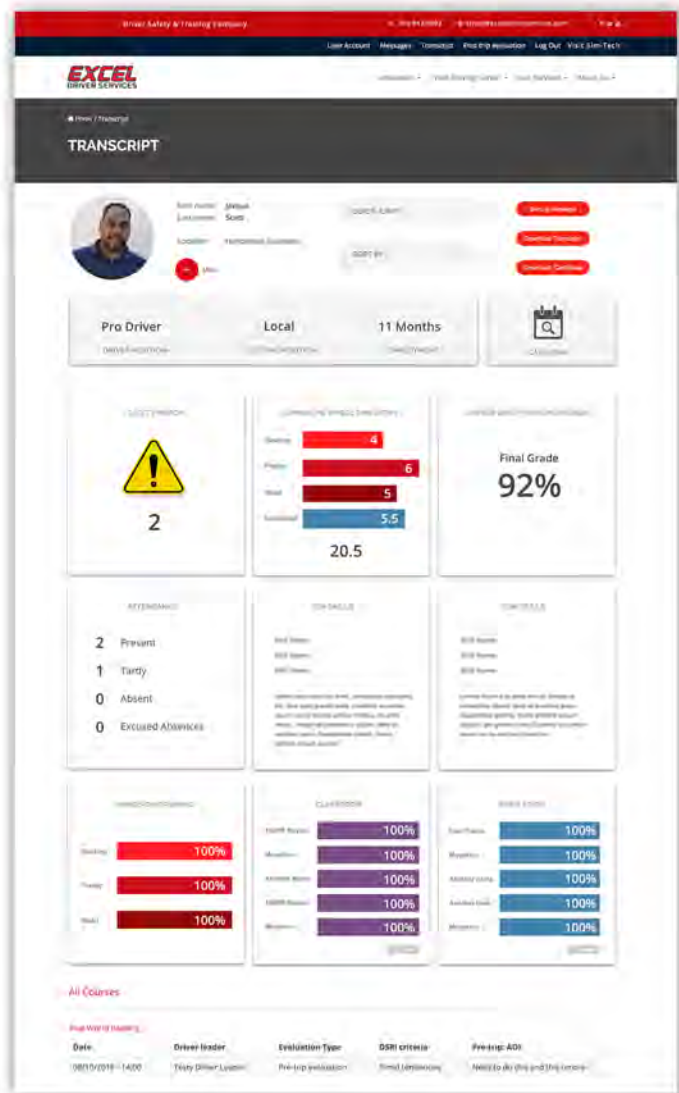


Get The Most Out of Your Simulation Training Experiences With Our Intuitive Professional Driver Transcripts

Easily scale and monitor your training curriculum with our Professional Driver Transcripts. Simulation Training is the most advanced experience you can bring to your drivers. Having trained over 130,000 drivers, we have been able to identify key factors of driver's behavior to help you identify strengths and weaknesses of your operating fleet.

Features

- ❖ Schedule drivers for training in your curriculum.
- ❖ Identify key risk factors that may put your drivers at a higher risk.
- ❖ Identify Strengths of your drivers to put them in the most qualified position.
- ❖ Focus your training time with recommended skills training.
- ❖ Get snapshots and progression of drivers throughout their training experience.
- ❖ Printable PDF Transcripts.
- ❖ Maximum Privacy User Accounts.
- ❖ Certificates & Scanned Copies for Downloadable Documents.
- ❖ Organized Training Reports in a single view.
- ❖ Individual User Records all on one site.



Sim-Tech
SIMULATION TECHNOLOGY

1710 Afton Rd. Sycamore, IL 60178
www.sim-tech.us
630.365.3400

MOBILE TRAINING CLASSROOMS



Long Term Mobile Training With Unmatched Build Quality

Built to the highest quality standards possible, Train professional drivers where and when its possible with Mobile Training Classrooms. By bringing training to those who need it most, you are able to expand your reach and coordinate the most impactful curriculum possible. Our Mobile Training Classrooms allow you to bring your simulators and training knowledge directly to the field and expand your training footprint.

Build Features

- ◊ Insulated for Comfortable Operation in Hot and Cold Weather.
- ◊ 100% Aluminum Design.
- ◊ Built For Power Efficiency.
- ◊ LED Lighting.
- ◊ Generator and Shore Power.
- ◊ Efficient and Powerful HVAC Cooling and Heating.
- ◊ Low Cost of Operation.
- ◊ Quality Quiet Diesel Generators .



Maximize operators time & classroom space with life changing skill training in the field.

Build Options

- ◊ Mobile Training Classrooms.
- ◊ Air Ride Suspension.
- ◊ Cushioned Bench Seating.
- ◊ Storage Heaters.
- ◊ Custom Branded Trailer Wraps Available.



Sim-Tech
SIMULATION TECHNOLOGY

1710 Afton Rd. Sycamore, IL 60178

www.sim-tech.us

630.365.3400

MOBILE TRAINING CLASSROOMS



Fully Loaded Mobile Classrooms Ready to Be Built to Your Specifications

Mobile Simulation Training brings turn-key skill training to operators in the field. Our mobile trailers are built with the highest quality materials for long-term reliability in the field. Durability for mobile training classrooms is key and we are the team you can count on to deliver!

Defining Features

- Onan 10kW up to 40kW Quiet Generator.
- R13 Insulation Value.
- Service doors to access simulators without having to remove the sims from the trailer.
- Multi-Zone Air Conditioning.
- Dimmable Lighting for Use While Training.
- 100% Aluminum Construction.
- Customizable Trailer Wrap Graphic Options Available.
- Custom Sizes Available For Specific Needs.



22' Tag Trailer



ROAD SIDE VIEW



CURB SIDE VIEW



CURB SIDE VIEW

40' Fifth-wheel Trailer



CURB SIDE VIEW

34' Tag Trailer



ROAD SIDE VIEW



CURB SIDE VIEW



Sim-Tech
SIMULATION TECHNOLOGY

1710 Afton Rd. Sycamore, IL 60178
www.sim-tech.us
630.365.3400

SIMULATOR SERIES



Sim-Tech Simulator Systems are built with one purpose in mind - Functionality. Considerable research and development have allowed us to achieve our ultimate functionality goal to become the leading innovators in Driver Simulation Training. Our Systems are built with a single computer for lower power consumption, and easy maintenance regardless of technical experience.

Genesis Series Simulators

"Industry leading innovation for 10 years and counting"

- 5 LED Immersive Monitors
- 230° Field of View
- OEM Vehicle Components
- OEM Vehicle Dynamics
- 3 Degree of Freedom Motion Option
- Optimized for Mobile Training
- Single Computer
- Mass Training Opportunities
- Compatible with Neo Series



Neo Series Simulators

"Bring your body into a virtual training environment"

- Industry Leading Virtual Reality Headset
- 200° Field of View at All Times
- Interact With a 360 Degree Virtual World
- 3 Degree of Freedom Motion Option
- Optimized for Mobile Training
- Single Computer
- Mass Training Opportunities
- Minimal Footprint
- Compatible with Omega, Genesis, and Raptor Series



Sim-Tech
SIMULATION TECHNOLOGY

1710 Afton Rd. Sycamore, IL 60178

www.sim-tech.us

630.365.3400

SIMULATOR SERIES



Each simulator series offers a unique immersion experience, which determines the amount of realism the student experiences. All simulators are designed with a unique field-of-view (FOV) for accurate spatial geometry from the driver's viewpoint. Our Simulators offer industry leading FOV and driver viewpoints allowing you to choose from a wide range of immersion experiences to best suit your safety training curriculum and protect your valuable team.

Omega Series Simulators

"Step into a real cab and train in a virtual environment"

- 3 - 5 Forward 4k Monitors up to 96 Inches
- 2 - 3 Rear 4k Monitors up to 96 Inches
- 300° - 340° Total Field of View
- OEM Vehicle Components
- OEM Vehicle Dynamics
- Option for Mobile Training
- Single Computer
- Limitless Training Opportunities
- 3 Degree of Freedom Motion Option
- Full Cab Designs
- Rear Mirrors for Scanning to Rear 4k Display Monitors
- Compatible with Neo Series



Raptor Series Simulators

"Add simulation to your curriculum in a minimal footprint"

- 3 Forward LED Monitors
- 130° Field of View
- Lightweight
- Fits through a 36" Doorway
- Single Computer
- Mass Training Opportunities
- Low Cost High Throughput
- Compatible with Neo Series



Sim-Tech
SIMULATION TECHNOLOGY

1710 Afton Rd. Sycamore, IL 60178

www.sim-tech.us

630.365.3400

OMEGA SERIES



Sim-Tech driving simulators are designed with over 2 decades of simulation training experience. We continue to advance this technology by producing systems that first responders can gain not only rich decision-making experiences, but develop lifesaving skills training. Omega Series Driving Simulators are designed for multiple training needs including research, education and specialized industries. Capabilities can be completely customized for specific user experiences.

User Experience

- ❖ Step inside a road-worthy cab and drive in a virtual world.
- ❖ Multiple vehicle choices to choose from.
- ❖ Training for basic operation, emergency response and similar learning environments.
- ❖ Add or script weather, terrain and vehicle behaviors to the user experience.
- ❖ Train collision avoidance in any scenario.
- ❖ Use our training curriculum or build your own custom experience.
- ❖ Combine simulation scenarios with existing training to develop desired skills.
- ❖ Real mirrors used for a more impactful user experience.

"Send us the VIN #, and we'll build around the cab."



Cab Design

- ❖ Transit & School Busses
- ❖ Ford F Series
- ❖ International Prostar
- ❖ Spartan Metrostar
- ❖ Your Choice - Call Us Today

For an immersive driver training experience, have your drivers step into a road worthy cab and drive away in virtual reality. Give your instructors the best tools for success with multiple camera positions to observe drivers while training. Every Omega Series Simulator is built to give instructors the best tools for impactful training.



Sim-Tech
SIMULATION TECHNOLOGY

1710 Afton Rd. Sycamore, IL 60178
www.sim-tech.us
630.365.3400

OMEGA SERIES



Key Features

- Ergonomically correct fully functional cabs with OEM components.
- BoneKrusher™ force feedback steering with true mechanical hardstop is the most realistic in the industry.
- 300° field of view screens in high definition create an immersive user experience, featuring real mirrors.
- SimCommand is fast and easy to use while training. Our system easily controls our training interface and documents findings on scenarios to provide the highest quality user experience.
- Mobile Capable System - Our systems are built to withstand long-term mobile training use.
- 5.1 surround sound with a tactile transducer in-seat for curb strikes, road feels and terrain changes.
- 96" HD Projection or Monitor Displays

Build Options

- Custom Dashes
- 3-DOF Motion
- Q-Siren
- 4k Monitors up to 96 Inches
- Recording Studio



Sim-Tech
SIMULATION TECHNOLOGY

1710 Afton Rd. Sycamore, IL 60178

www.sim-tech.us

630.365.3400

GENESIS SERIES



Genesis Systems combine realistic driving feedback in a compact footprint. The most capable system in the market for mobile applications, the Genesis Series delivers results to all industry applications with custom cab designs, fit for your specific training needs.

Key Features

- ❖ Built to last. Our aluminum cabs are light and stable for long term use.
- ❖ Ergonomically correct fully functional cabs with OEM components.
- ❖ Emergency equipment console with fully functional emergency light switches and sirens.
- ❖ BoneKrusher™ force feedback steering with a true mechanical hardstop is the most realistic in the industry.
- ❖ 230° field of view screens in high definition create an immersive user experience.
- ❖ SimCommand is fast and easy to use while training. Our system easily controls the training interface and documents findings on scenarios to provide the highest quality user experience.
- ❖ Mobile capable system. Our systems are built to withstand long-term mobile training use.
- ❖ 5.1 surround sound with a tactile transducer in-seat for curb strikes, road feels and terrain changes.



User Experience

- ❖ Multiple vehicle models to choose from.
- ❖ Training for basic operation, emergency response and specialty learning environments.
- ❖ Add or script weather, terrain and vehicle behaviors to cater the user experience.
- ❖ Train collision avoidance in any scenario.
- ❖ Use our training curriculum or build your own custom experience.
- ❖ Combine simulation scenarios with existing training to develop desired skills.

Build-Options

- ❖ 3-DOF Motion
- ❖ Mobile Data Terminal
- ❖ Firecom
- ❖ Recording Studio



Sim-Tech
SIMULATION TECHNOLOGY

1710 Afton Rd. Sycamore, IL 60178

www.sim-tech.us

630.365.3400

GENESIS SERIES MODELS



Genesis Series™ Light Duty Models

- Ford F-Series
- Dodge Charger
- Chevrolet Tahoe

Light Duty Vehicles Include:

- Emergency Consoles
- Pump Switch Panels
- Virtual Laptops On-Screen (MDT's)
- Virtual GPS On-Screen
- Siren
- Radio Dispatch

Genesis Series™ Heavy Duty Models

- Navistar School Bus
- Spartan Metrostar
- Navistar 4300 Series
- Kenworth T680 Semi Tractor
- New Flyer Transit Bus

Heavy Duty Vehicles Include:

- Emergency Consoles
- Pump Switch Panels
- Virtual Laptops On-Screen (MDT's)
- Virtual GPS On-Screen
- Siren Pannels
- Radio Dispatch
- Manual and/or Automatic Transmissions
- Air Brake Controls

Genesis Series™ Ford Model



Genesis Series™ New Flyer Bus



Genesis Series™ Spartan Model



Sim-Tech
SIMULATION TECHNOLOGY

1710 Afton Rd. Sycamore, IL 60178

www.sim-tech.us

630.365.3400

RAPTOR SERIES



The Ultimate, Lightweight, Purpose-Built Mobile Training Systems

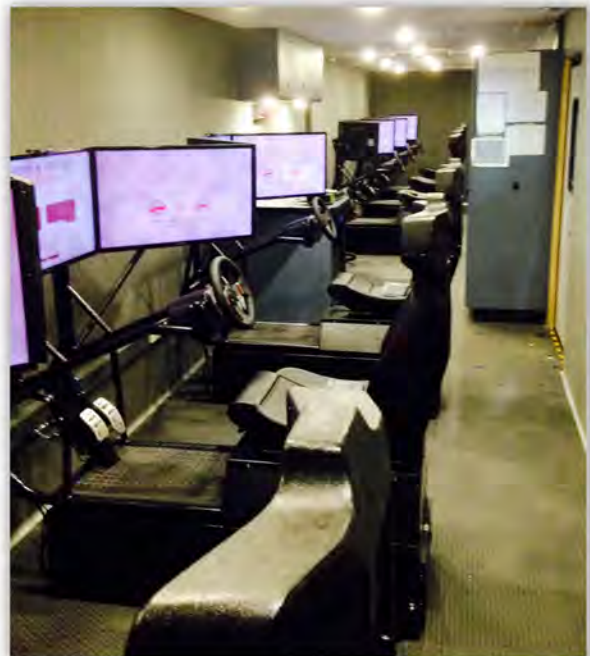
Sim-Tech Systems are built for end user functionality. Tactile features and robust scenarios are available for training programs with the capability to develop new and experienced drivers. Simulation offers the opportunity to withstand an ever changing workplace environment and the hazards drivers face everyday. Considerable research and development have allowed us to achieve high functionality and deliver robust dynamics that create critical experience for all levels of drivers.



Key Features

- Smallest Series Footprint Available
- Easily Coach up to 6 Drivers at a Time
- Lightweight & Durable Builds
- Only Durable High Quality Materials
- Instructor Oriented Training
- Single Computer for Easy Maintenance

Utilize Instructor's time and training space with the most durable, compact simulation series in the industry! Every purpose built system is turn-key and ready to operate at your maximum capacity.



Sim-Tech
SIMULATION TECHNOLOGY

1710 Afton Rd. Sycamore, IL 60178

www.sim-tech.us

630.365.3400

RAPTOR SERIES



Raptor Series Suitcase

*Introducing the Sim-Tech Suitcase.
For the most mobile simulation
training experience in the industry!*

Suitcase Key Benefits

- Mobility.
- Add valuable simulation training to your existing training facilities.
- Elevated Instructor insight into a driver's behavior with the lowest price in the industry.
- Perfect for mobile VR Training.



Raptor Series Desktop

Desktop Driving Simulators are an excellent solution for entry-level driver training at a low cost. With an easy setup procedure, take advantage of existing training facilities in your existing classroom space and add skill based simulation training to your training curriculum!

Desktop Key Benefits

- Add valuable simulation training to your existing training facilities.
- Elevated Instructor insight into a driver's behavior with the lowest price in the industry.



Sim-Tech
SIMULATION TECHNOLOGY

1710 Afton Rd. Sycamore, IL 60178

www.sim-tech.us

630.365.3400

NEO SERIES



State-of-the-Art Fully Immersive Professional Driver Training

To put it simple, Sim-Tech is pioneering the most advanced technology in the industry. Our unique experience is unmatched in professional driver training and software innovation. In order to meet the training advancements to our customers, we offer the most immersive driver experience possible - exactly how the human brain would like it. When entering see-through virtual reality, you will be encapsulated with a field of view larger than life, with the ability to interact with a 360° virtual world and actual vehicle cab.

Cost Effective Training Without Compromise

Use your body like you would in the real world. With the Neo Series Simulators, your eye point changes with your head movement, allowing you to interact with a 360° environment and actual vehicle cab - exactly like the real world.

- Tethered Training
- Minimal footprint
- Available as an upgrade to all Sim-Tech Simulators, or as a stand-alone system.



Experience Truly Immersive Driver Training



Sim-Tech
SIMULATION TECHNOLOGY

1710 Afton Rd. Sycamore, IL 60178

www.sim-tech.us

630.365.3400

NEO SERIES



Bring Your Body Into a Virtual Training Environment

Neo Series Simulators Key Features

- Compatible with Omega, Genesis & Raptor Series Driving Simulators
- VR Headset Replaces Monitors
- 200° Field of View at All Times
- Interact With a 360 Degree Virtual World
- 3 Degree of Freedom Motion Option
- Optimized for Mobile Training
- Single Computer
- Mass Training Opportunities
- Minimal Footprint



Sim-Tech
SIMULATION TECHNOLOGY

1710 Afton Rd. Sycamore, IL 60178

www.sim-tech.us

630.365.3400

SIMULATION LEARNING MATERIALS



Virtural Reality Training For Any Vehicle

Simulation Learning Materials Key Features

- Use dexterity to interact with driving components
- 180° - 200° field of view at all times
- Single Computer
- Minimal footprint
- Interact with a 360° Virtual World
- Live Feedback
- ▣ Launch From Training Calendar with live feedback
- ▣ Track Students Individual attempts by % and time



Sim-Tech
SIMULATION TECHNOLOGY

1710 Afton Rd. Sycamore, IL 60178

www.sim-tech.us

630.365.3400



Fully Immerse & Interact With Vehicles

Simulation Learning Materials Key Features

Simulation Learning Material is created for Any-Vehicle, and modeled for Any-Component. Quickly identify strengths and weaknesses of a learner throughout a program with instant-feedback to the Training Calendar and Transcripts. Each training-skill defined in the learning program, is equip with Custom Quiz Questions, AOI Feedback, Concrete Targets & Objectives. Our AI is then able to process which skills need to be trained to turn that learner's deficiencies into well-practiced skills. This makes the best use of that learner's time, is engaging, and apart of a well described training process.

Cost Effective Training With Out Compromise

- ❖ Display Learning Targets & Concrete Learning Objectives per each component.
- ❖ Dexterity feedback for immersion.
- ❖ Record Unlimited attempts.
- ❖ Track progress of a learning experience.
- ❖ Reference material for the price of electricity.



Sim-Tech
SIMULATION TECHNOLOGY

1710 Afton Rd. Sycamore, IL 60178
www.sim-tech.us
630.365.3400

FIRE PUMP PANEL SERIES



The fire pump panel series includes the Model S (side mount) and Model T (top mount) and includes all aspects of fire-pump operations. Sim-Tech customers have the option to configure their system-components to replicate multiple configurations. Apparatus controls, touch screen controls and physical gauges are configured on our aluminum chassis to replicate your exact equipment. When using the Fire Pump Panel Simulator for training, the instructor is able to augment various aspects of the scenario including:

Water Sources

Configurable internal water boost tank, water tank size, hydrants, single & two-stage pump ability

Pumping Evolutions

Configurable hose sizes & lengths, hose nozzles, water supplies

Various Engine Conditions

Low oil pressure, air pressure, battery voltage, engine temperature, pump temperature, check engine, stopped-engine, low fuel

Foam System

Configurable foam tank size, foam type, foam tank level, foam discharges



Sim-Tech
SIMULATION TECHNOLOGY

1710 Afton Rd. Sycamore, IL 60178
www.sim-tech.us
630.365.3400

FIRE PUMP PANEL SERIES



Pump Pro™ software allows instructors to set up and then save, training situations that are combinations of water sources, intakes, pump configurations, discharges, water sinks, and other environmental and vehicle-related conditions. All technical parameters such as water capacities, hose lengths, friction coefficients, and more are stored in a database. Trained instructors can create new-customized versions of standard scenario situations or edit existing scenarios to add entirely new set of challenges based on changes to the hoses, water sources, pumps, or vehicle as desired.

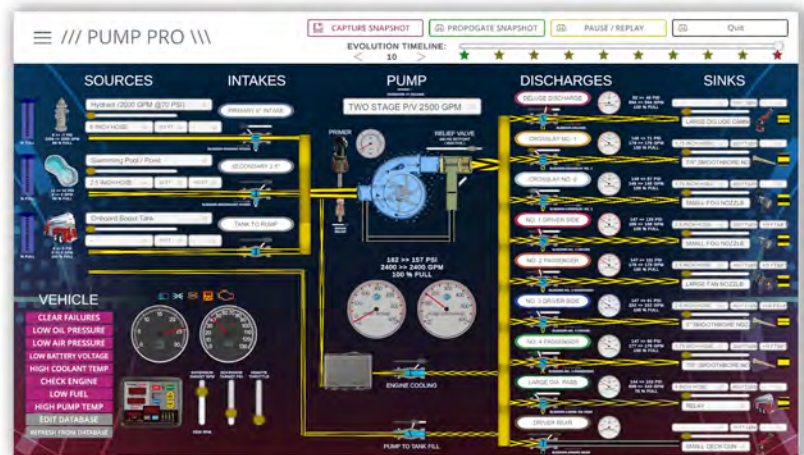
All controls on the Pump Panel Model S are functional and controllable

- Discharge Valves
- Physical Connections
- Relief Valve
- Pump Primers
- Drain Valves

Integration with Sim-Tech Driving Simulators

If you are the proud owner of an existing Sim-Tech driving simulator, this integration is even easier. Use your existing login credentials to enjoy the same benefits of the Drive Prodigy™ Learning Management System. Train in an environment with multiple users simultaneously.

- Stand-alone system
- Integration with existing Sim-Tech Driving Simulators



PumpPro Evolution Control



PumpPro 3D Scene View



1710 Afton Rd. Sycamore, IL 60178
www.sim-tech.us
 630.365.3400

CRANE SIMULATOR



The Sim-Tech Crane Operator Simulator is designed to be used in coordination with the Sim-Tech Kenworth T-680 simulator or operated as a standalone unit. This unit will deliver essential skills for the training of personnel in major training areas such as missile silo operations and basic lifting platforms. Environmental conditions such as rain, wind, fog, or snow deliver realistic environmental feedback to the student while training.



Features

- Powered by your existing simulator equipment
- Available as a standalone training unit
- Integrated VR
- Integrated AR
- Configurable system settings
- Environmental condition feedback



Sim-Tech
SIMULATION TECHNOLOGY

1710 Afton Rd. Sycamore, IL 60178
www.sim-tech.us
630.365.3400

CRANE SIMULATOR



The Sim-Tech Crane Simulator utilizes the latest state-of-the-art augmented reality (AR) to experience "your own hands" in a workstation. This station consists of a user platform, with an optional 2 degree-of-freedom (DOF) motion base for stability while utilizing dynamics as demonstrated on the 1400H National Crane. The Crane Simulator will perform in conjunction with your existing Sim-Tech AR lineup.

Key functionality on a stand-alone platform

- ▣ Rig-up/rig-down procedures of outriggers
- ▣ Assessment of terrain and payload to be moved
- ▣ Ability to watch from the platform and perform crane operation utilizing controls as on the crane platform
- ▣ Full movement, boom extension, and utilization of payload for 33-ton maximum capacity, 167' maximum tip height, and load monitor system



Sim-Tech
SIMULATION TECHNOLOGY

1710 Afton Rd. Sycamore, IL 60178
www.sim-tech.us
630.365.3400

PRE-TRIP PRO



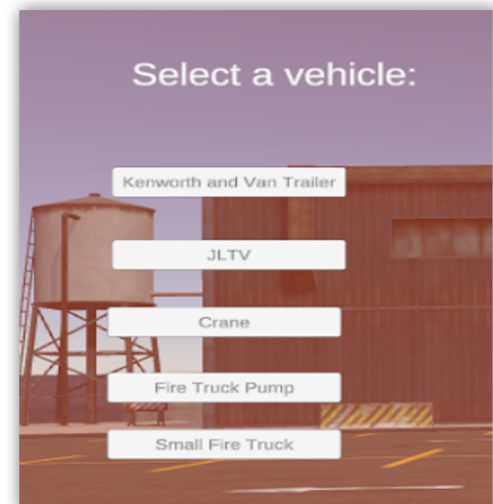
Efficient Vehicle Inspection Training

Gain access to efficiency in your vehicle inspection training with consistent simulation training. The Drive Prodigy Pre-trip Pro Simulation Learning Materials allow each student to interact with complete vehicle models in Virtual Reality, before hands-on training. Each vehicle model has their own set of specific vehicle inspection-components. Each vehicle inspection-component will "highlight" itself when interacted with, and comes complete with unique Quiz Questions, Learning Materials, and Areas of Improvement (AOIs).

Cost Effective Training Without Compromise

We are able to build custom vehicle models, or you can select the right application below for your training needs:

- Class A CDL Tractor & Trailer
- Class B CDL Tractor
- Fire Apparatuses
- Military Equipment
- Industrial Equipment



Sim-Tech
SIMULATION TECHNOLOGY

1710 Afton Rd. Sycamore, IL 60178
www.sim-tech.us
630.365.3400



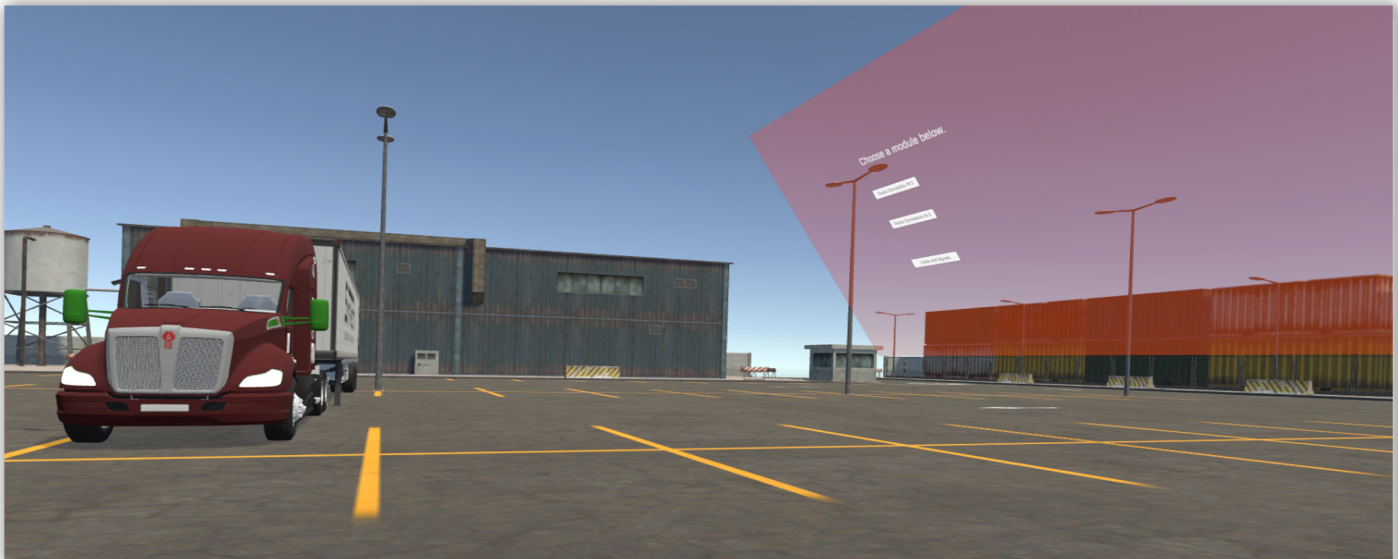
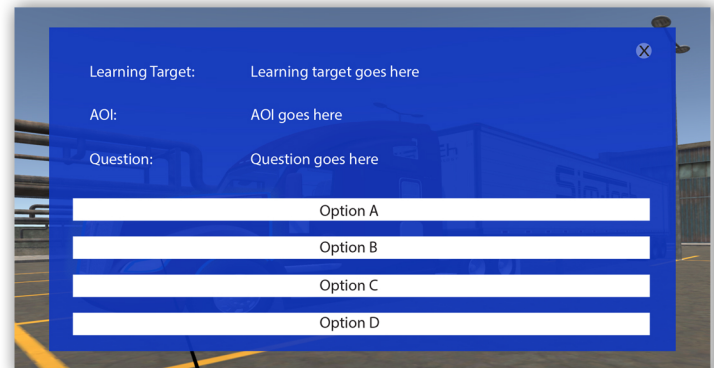
Drive Prodigy Learning Management System

Create new users, and schedule classes for each user to track training progress, in the Drive Prodigy Learning Management System (LMS). The LMS allows Safety Managers, Instructors, and Students the ability to see precise training details. Completion of the learning program will display a unique transcript of the student's training events. From here, you will be able to pinpoint each individual component that the student has achieved – or not achieved – and focus your hands-on training efforts based on the student's AOIs.

Students may also see their results, and will be offered additional training materials to help the student achieve the missed components.

The learning is also able to be completed on:

- Virtual Reality headsets
- Desktop computers
- Mobile devices - tablets & phones



Sim-Tech
SIMULATION TECHNOLOGY

1710 Afton Rd. Sycamore, IL 60178
www.sim-tech.us
630.365.3400